

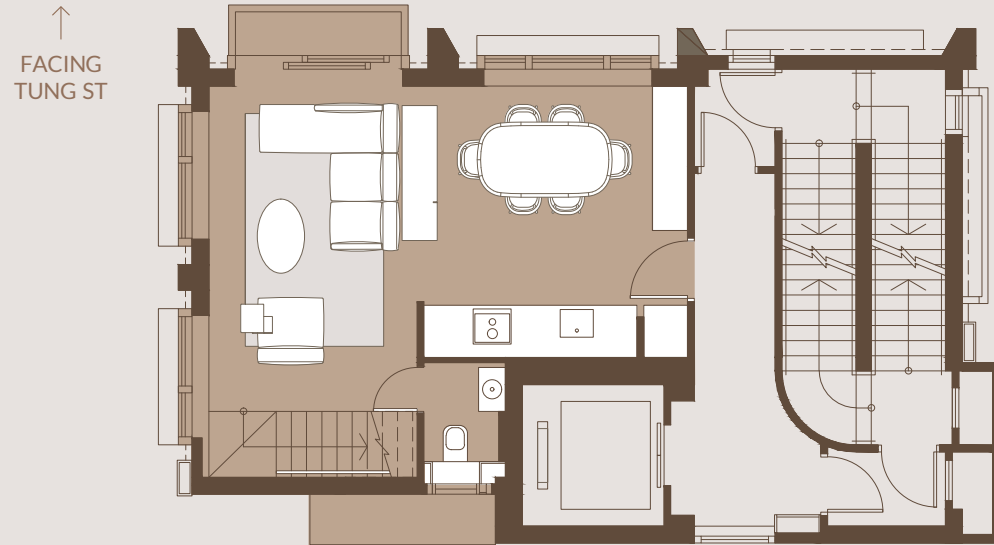
DUPLEX UNIT

(17/F - 17U/F, 18/F - 18U/F &
19/F - 19U/F)

AREA SCHEDULE

Floor	Saleable Area (including balcony, utility platform and verandah, if any) square feet (sf)
17/F-17U/F, 18/F-18U/F, 19/F-19U/F	1157 sf (including Balcony: 22 sf; Utility Platform: 20 sf)

FLOOR PLAN OF 17/F, 18/F & 19/F

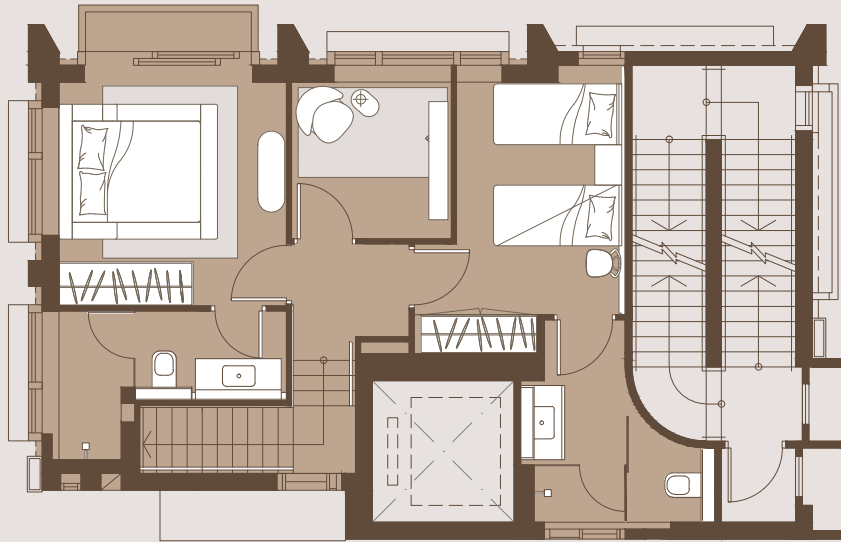


Remarks

1. The areas as specified above have been converted to square feet based on a conversion rate of 1 square metre = 10.764 square feet and rounded to the nearest whole square foot.
2. The saleable area of the residential property and the floor area of balconies, utility platforms and verandahs (if any) are calculated in accordance with section 8 of the Residential Properties (First-hand Sales) Ordinance and the areas of other specified items (not included in the saleable area) are calculated in accordance with Part 2 of Schedule 2 of the Residential Properties (First-hand Sales) Ordinance.
3. The internal areas of the residential properties on the upper floors will generally be slightly larger than those on the lower floors because of the reducing thickness of the structural walls on the upper floors.
4. This plan is provided for reference only and is not intended to display the final appearance or layout of the Development (or the relevant part thereof). For details of the Development, please refer to the sales brochure.

Floor Plan of 17U/F, 18U/F & 19U/F

↑
FACING
TUNG ST



0 1 5
Scale Metre

Remarks

1. The areas as specified above have been converted to square feet based on a conversion rate of 1 square metre = 10.764 square feet and rounded to the nearest whole square foot.
2. The saleable area of the residential property and the floor area of balconies, utility platforms and verandahs (if any) are calculated in accordance with section 8 of the Residential Properties (First-hand Sales) Ordinance and the areas of other specified items (not included in the saleable area) are calculated in accordance with Part 2 of Schedule 2 of the Residential Properties (First-hand Sales) Ordinance.
3. The internal areas of the residential properties on the upper floors will generally be slightly larger than those on the lower floors because of the reducing thickness of the structural walls on the upper floors.
4. This plan is provided for reference only and is not intended to display the final appearance or layout of the Development (or the relevant part thereof). For details of the Development, please refer to the sales brochure.

FURNITURE LIST

Dining Room	Length (mm)	Wide (mm)
Dining Table	2000	950
Dining Chair	575	525
Sideboard	2000	505
Built-in Cabinet	2130	500
Built-in Kitchen	3860	727
Cabinet with Fridge (In open kitchen)		

Living Room	Length (mm)	Wide (mm)
Sofa	1560	1000
Right-arm Chaise	840	2050
Sofa 2	720	1000
Coffee Table	1100	700
Side Table	430	470
Carpet	3450	2050

Master Bedroom	Length (mm)	Wide (mm)
Mattress	1500	1900
Platform	2000	2360
Wardrobe	1992	659
Sideboard	1400	400
Carpet	2550	2000

Bedroom 2	Length (mm)	Wide (mm)
Chair	750	830
Shelf	1750	380
Side Table	340	490
Carpet	2250	1550

Bedroom 1	Length (mm)	Wide (mm)
Bed 1	1900	900
Bed 2	1900	900
Headboard	3525	10
Nightstand	560	380
Chair	430	520
Wardrobe	1755	575

This furniture layout plan is for reference only. No furniture (except the built-in kitchen cabinet with fridge in the open kitchen and the built-in cabinet in the dining room) will be included in the relevant specified residential property upon completion.