

# SIMPLEX

(6/F - 12/F & 15/F)

## FLOOR PLAN OF 6/F - 12/F & 15/F



### AREA SCHEDULE

Floor	Saleable Area (including balcony, utility platform and verandah, if any) square feet (sf)
6/F - 12/F & 15/F	585 sf (Including Balcony: 22 sf)

### FURNITURE LIST #

Living Room and Dining Room	Length (mm)	Wide (mm)
Dining Table	1300	900
Dining Chair	490	390
Sofa	900	1200
Left-arm Chaise	1800	1200
Coffee Table	905	740
Carpet	2150	2450
Sideboard	1920	525
Built-in Cabinet	1740	355
Built-in Kitchen Cabinet with Fridge (In open kitchen)	2745	725

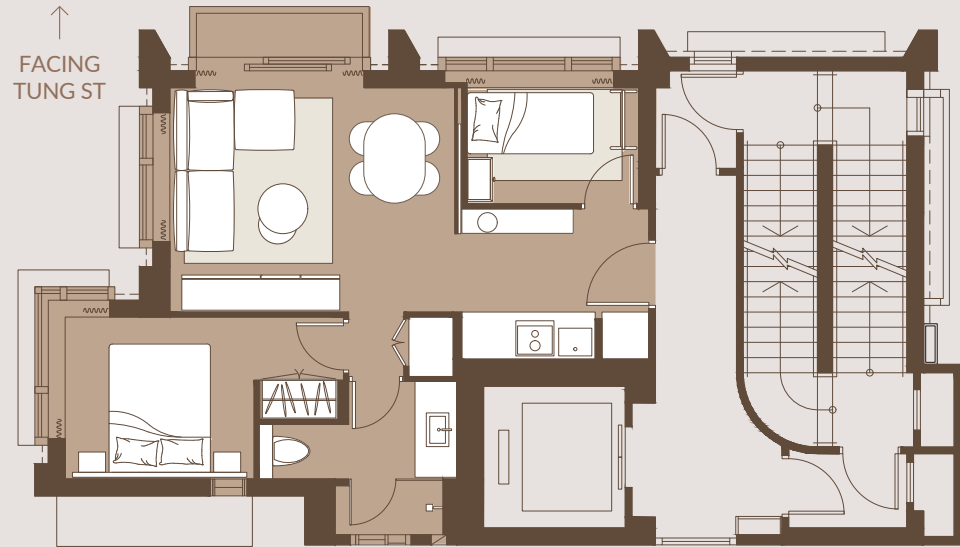
### Master Bedroom

Bed	1500	1965
Headboard	2585	40
Nightstand	415	310
Built-in Wardrobe	730	955

### Bedroom

Bed	900	1900
Bedside Cabinet	560	400
Coat Rack	440	720
Carpet	1350	2000

# This furniture layout plan is for reference only. No furniture (except the built-in kitchen cabinet with fridge in the open kitchen, built-in cabinet in the living room and dining room and the built-in wardrobe in the master bedroom) will be included in the relevant specified residential property upon completion.



### Remarks

1. The areas as specified above have been converted to square feet based on a conversion rate of 1 square metre = 10.764 square feet and rounded to the nearest whole square foot.
2. The saleable area and the floor area of balconies, utility platforms and verandahs (if any) are calculated in accordance with section 8 of the Residential Properties (First-hand Sales) Ordinance and the areas of other specified items (not included in the saleable area) are calculated in accordance with Part 2 of Schedule 2 of the Residential Properties (First-hand Sales) Ordinance.
3. The internal areas of the residential properties on the upper floors will generally be slightly larger than those on the lower floors because of the reducing thickness of the structural walls on the upper floors.
4. This plan is provided for reference only and is not intended to display the final appearance or layout of the Development (or the relevant part thereof). For details of the Development, please refer to the sales brochure.