

DUPLEX UNIT

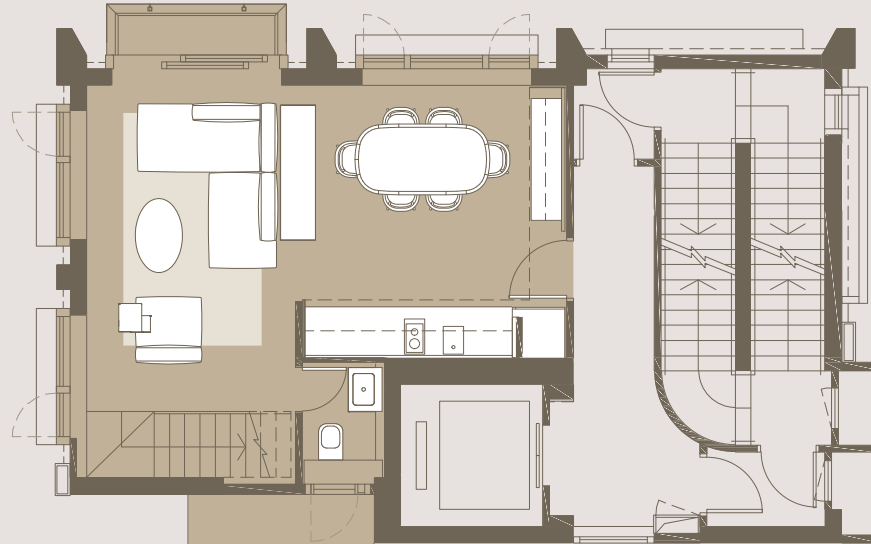
(17/F - 17U/F, 18/F -
18U/F & 19/F - 19U/F)

AREA SCHEDULE

Floor	Saleable Area (including balcony, utility platform and verandah, if any) square feet (sf)
17/F -17U/F,	1157 sf
18/F-18U/F,	(including Balcony: 21 sf;
19/F-19U/F	Utility Platform: 20 sf)

FLOOR PLAN OF 17/F, 18/F &19/F

↑
FACING
TUNG ST

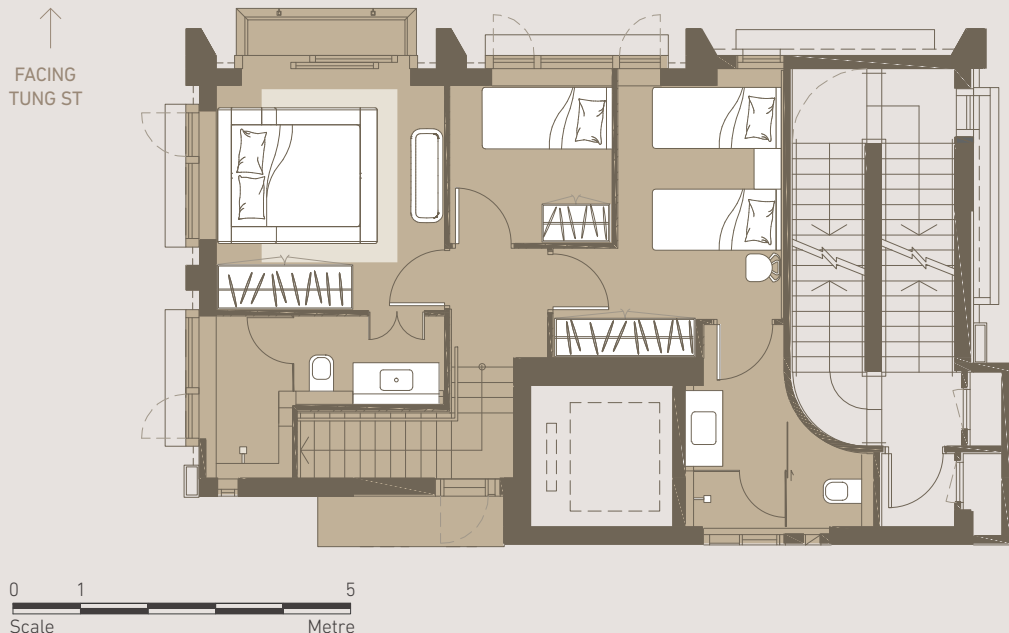


0 1 5
Scale Metre

Remarks:

1. The areas as specified above have been converted to square feet based on a conversion rate of 1 square metre = 10.764 square feet and rounded to the nearest whole square foot.
2. The saleable area and the floor area of balconies, utility platforms and verandahs (if any) are calculated in accordance with section 8 of the Residential Properties (First-hand Sales) Ordinance and the areas of other specified items (not included in the saleable area) are calculated in accordance with Part 2 of Schedule 2 of the Residential Properties (First-hand Sales) Ordinance.
3. The internal areas of the residential properties on the upper floors will generally be slightly larger than those on the lower floors because of the reducing thickness of the structural walls on the upper floors.
4. This plan is provided for reference only and is not intended to display the final appearance or layout of the Development (or the relevant part thereof). The Vendor reserves all rights to modify the Development and any part thereof in accordance with the latest building plans approved by the relevant government authorities from time to time. For details of the Development, please refer to the sales brochure.

FLOOR PLAN OF 17U/F, 18U/F & 19U/F



FURNITURE LIST

Dining Room	Length (mm)	Wide (mm)
Dining Table	2000	950
Dining Chair	575	525
Sideboard	2000	520
Built-in Cabinet	2130	500
Built-in Kitchen	3860	727
Cabinet with Fridge (In open kitchen)		

Living Room

Sofa	1400	1000
Right-arm Chaise	2050	1000
Sofa 2	1000	1000
Coffee Table	1100	700
Side Table	430	470
Carpet	3450	2050

Master Bedroom

Bed	2360	2000
Wardrobe	1992	659
Bench	1370	500
Carpet	2550	2000

Bedroom 2

Bed	1900	900
Wardrobe	1000	560

Bedroom 1

Bed 1	1900	900
Bed 2	1900	900
Headboard	3649	30
Nightstand	600	400
Chair	430	520
Wardrobe	1707	575

This furniture layout plan is for reference only. No furniture (except the built-in kitchen cabinet with fridge in the open kitchen and the built-in cabinet in the dining room) will be included in the relevant specified residential property upon completion.

Remarks:

1. The areas as specified above have been converted to square feet based on a conversion rate of 1 square metre = 10.764 square feet and rounded to the nearest whole square foot.
2. The saleable area and the floor area of balconies, utility platforms and verandahs (if any) are calculated in accordance with section 8 of the Residential Properties (First-hand Sales) Ordinance and the areas of other specified items (not included in the saleable area) are calculated in accordance with Part 2 of Schedule 2 of the Residential Properties (First-hand Sales) Ordinance.
3. The internal areas of the residential properties on the upper floors will generally be slightly larger than those on the lower floors because of the reducing thickness of the structural walls on the upper floors.
4. This plan is provided for reference only and is not intended to display the final appearance or layout of the Development (or the relevant part thereof). The Vendor reserves all rights to modify the Development and any part thereof in accordance with the latest building plans approved by the relevant government authorities from time to time. For details of the Development, please refer to the sales brochure.